

RNAV (GNSS) A

BADDECK (CROWN JEWEL)
BADDECK NS

NO CTL - BCST INTENTIONS ON 126.7 WITHIN 15 MIN OF ETA AND PRIOR TO DESCENT, THEN ON ATF 5 MIN PRIOR TO COMMENCING APCH

UNICOM 122.8 (ATF 5 NM) O/T TFC 122.8

ELEV 291

Feeder YHZ to VESRI overflying Port Hawkesbury (CYPD).

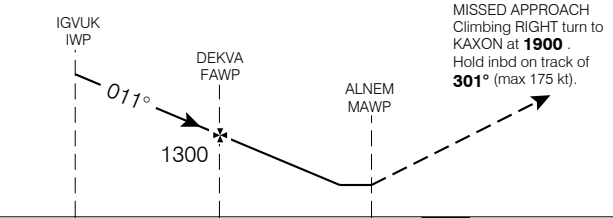
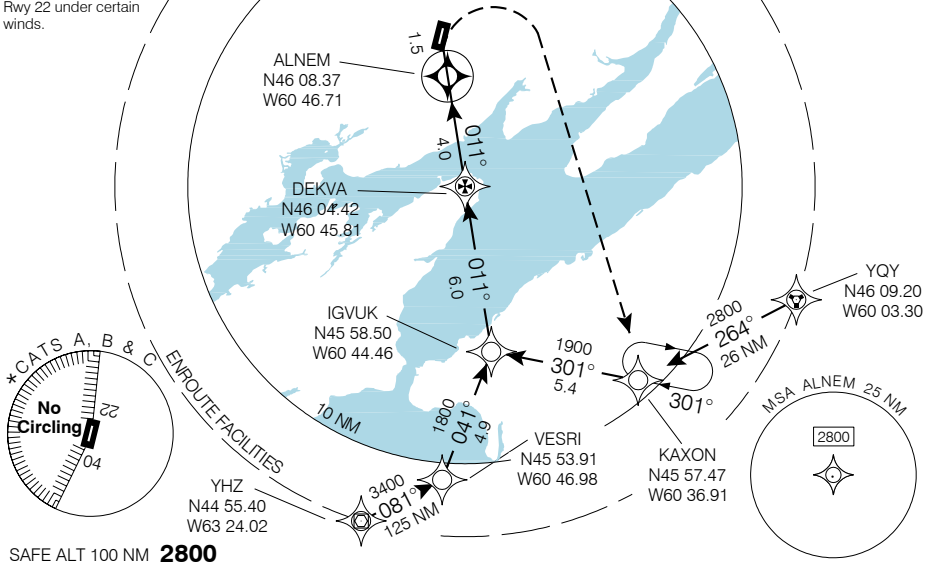
CDW2

Use Sydney altimeter setting.

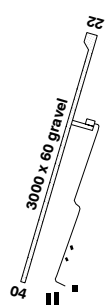
Seaplane activity in Baddeck Harbour 4.5 NM SSE.

Turbulence may be anticipated on apch to Rwy 22 under certain winds.

RESTRICTED OPS SPEC 099 OR 410 REQUIRED



Right hand circuits Rwy 04 (CAR 602.96)



CATEGORY	A	B	C	D
* CIRCLING	900 (609) 2	1040 (749) 2 1/4	1060 (769) 2 1/4	NOT AUTHORIZED

Knots	70	90	110	130	150
Min:Sec					

RNAV (GNSS) A

N46 09 51 W60 47 03

VAR 20°W (2005)

BADDECK NS

EFF 30 AUG 2007 CHANGE: New procedure
 REGULATORY REVIEW 18 NOV 2010

BADDECK (CROWN JEWEL)
NAD83

Source of Canadian Civil Aeronautical Data: © 2007 NAV CANADA All rights reserved